



ONE-STOP SYSTEM

Planning / Research / Development / Production

NEW DACH CAM

D-FORCE S1 (for Truck)
D-FORCE S1 (for VAN)
GT9000
G-ON4 PRO
Z9
MVR Y1

2 CH DACH CAM

G-ONX
G-ON2
G-ON4
G-ONQ

G-ONW
G6
Z7
G7
Z8
M7T
QVS100
HANBL-U

3 CH DACH CAM

G-ON3
Alpha 3X
Alpha egde
GT1000 PRO
GTX premium
HANCAM 3X-Q

4 CH DACH CAM

D-FORCE S1 (for Truck)
D-FORCE (for VAN)
GT9000
GT900 a premium

1 CH DACH CAM

Z1

MOTORCYCLE CAM

MVR Y1
MVR S1
MVR G1 PRO
MVR Q1



NEW DASH CAM



D-FORCE S1 TRUCK



D-FORCE S1 VAN



GT9000

NEW

NEW DASH CAM



Z9



G-ON4 PRO



MVR Y1

2CH QHD | QHD DASH CAM

G-ON4 PRO

withCLOUD®

NEW



DASH
CAM
—
2 CH

2CH QHD | QHD DASH CAM

G-ON4 PRO



Specification

Resolution / Frame Rate	Front : UHD (3840 X 2160) / Rear : FHD (1920 X 1080) / All cameras : Max. 30 FPS
Image Sensor	SONY STARVIS 2 IMX678
Audio input	Built-in Microphone
G-Sensor	Event recording by External Shock
Video / Audio Compression	H.265 / ADPCM
Speaker	Operation Status alarm / Voice guidance
External GPS	Synched with Google map, Keep track of location and Speed
Angle Of View	Front : 150 ° , Rear : 140 °
Acceptable current value of the supplied fuse	3A
Power	DC 12V ~ 24V
Operation Temperature /Humidity	-10°C ~ 70°C(Storage temperature:-20°C ~ 80°C) / Humidity:10~95%
PC Viewer	Windows XP/7/8/10, Support 32Bit / 64Bit, Synchronizing Google map with PC viewer is supported over Windows7 and explorer 10 as per Google' s policy.

DASH
CAM

2 CH

2CH QHD | FHD DASH CAM

Z9

NEW

DASH
CAM
—
2 CH



2CH QHD | FHD DASH CAM

Z9



Specification

Resolution / Frame Rate	Front QHD(2560x1440P) / Rear 1080P(1920x1080P) All cameras Max 30fps
Image Sensor	Full HD CMOS Sensor
Audio input	Built-in Microphone
G-Sensor	Event recording by External Shock
Video / Audio Compression	H.264 / ADPCM
Speaker	Operation Status alarm / Voice guidance
External GPS	Synched with Google map, Keep track of location and Speed
Angle Of View	All : 140 °
Acceptable current value of the supplied fuse	3A
Power	DC 12V ~ 24V
Operation Temperature / Humidity	-10°C ~ 60°C(Storage temperature: -20°C ~ 80°C) / Humidity: 10~95%
PC Viewer	Windows 7/8/10, Support 32Bit / 64Bit, WebView2 Runtime is required to use Google map.
LCD(Touch)	480x320 Pressure type LCD PANEL

DASH
CAM

2 CH

2CH FHD | FHD DASH CAM

G-ONX



DASH
CAM
—
2 CH

2CH FHD | FHD DASH CAM

G-ONX



Specification

Resolution / Frame Rate	Front : FHD (1920 X 1080) / Rear : FHD (1920 X 1080) / All cameras : Max. 30 FPS
Image Sensor	SONY Starvis
Audio input	Built-in Microphone
G-Sensor	Event recording by External Shock
Video / Audio Compression	H.264 / ADPCM
Speaker	Operation Status alarm / Voice guidance
External GPS	Synched with Google map, Keep track of location and Speed
Angle Of View	Front : 140 ° , Rear : 140 °
Acceptable current value of the supplied fuse	3A
Power	DC 12V ~ 24V
Operation Temperature /Humidity	-10°C ~ 70°C(Storage temperature:-20°C ~ 80°C) / Humidity:10~95%
PC Viewer	Windows XP/7/8/10, Support 32Bit / 64Bit, Synchronizing Google map with PC viewer is supported over Windows7 and explorer 10 as per Google' s policy.

DASH
CAM

2 CH

2CH QHD | FHD DASH CAM

G-ON2

withCLOUD®

DASH
CAM
2 CH



2CH QHD | FHD DASH CAM

G-ON2



Specification

Resolution / Frame Rate	Front : QHD 1440P / Rear : FHD 1080P (1920 X 1080) / Option - Interior : FHD 1080 (1920 X 1080), Exterior : FHD 1080 (1920 X 1080) / All cameras : Max. 30 FPS
Image Sensor	SONY Starvis (HDR)
Audio input	Built-in Microphone
G-Sensor	Event recording by External Shock
Video / Audio Compression	H.265 / ADPCM
Speaker	Operation Status alarm / Voice guidance
External GPS	Synched with Google map, Keep track of location and Speed
Angle Of View	Front : 140 ° , Rear : 140 ° , Option - Interior : 180 ° , Exterior : 140 °
Acceptable current value of the supplied fuse	3A
Power	DC 12V ~ 24V
Operation Temperature /Humidity	-10°C ~ 70°C(Storage temperature:-20°C ~ 80°C) / Humidity:10~95%
PC Viewer	Windows XP/7/8/10, Support 32Bit / 64Bit, Synchronizing Google map with PC viewer is supported over Windows7 and explorer 10 as per Google' s policy.

DASH
CAM

2 CH

2CH UHD | FHD DASH CAM

G-ON4

withCLOUD®



DASH
CAM
2 CH

2CH UHD | FHD DASH CAM

G-ON4



Specification

Resolution / Frame Rate	Front : UHD (3840 X 2160) / Rear : FHD (1920 X 1080) / All cameras : Max. 30 FPS
Image Sensor	SONY Starvis (HDR)
Audio input	Built-in Microphone
G-Sensor	Event recording by External Shock
Video / Audio Compression	H.265 / ADPCM
Speaker	Operation Status alarm / Voice guidance
External GPS	Synched with Google map, Keep track of location and Speed
Angle Of View	Front : 150 ° , Rear : 140 °
Acceptable current value of the supplied fuse	3A
Power	DC 12V ~ 24V
Operation Temperature /Humidity	-10°C ~ 70°C(Storage temperature:-20°C ~ 80°C) / Humidity:10~95%
PC Viewer	Windows XP/7/8/10, Support 32Bit / 64Bit, Synchronizing Google map with PC viewer is supported over Windows7 and explorer 10 as per Google' s policy.

DASH
CAM

2 CH

2CH QHD | QHD DASH CAM

G-ONQ

withCLOUD®



DASH
CAM

2 CH

2CH QHD | QHD DASH CAM

G-ONQ



Specification

Resolution / Frame Rate	Front : QHD (2560 X 1440) / Rear : QHD (2560 X 1440) / All cameras : Max. 30 FPS
-------------------------	--

Image Sensor	SONY Starvis (HDR)
--------------	--------------------

Audio input	Built-in Microphone
-------------	---------------------

G-Sensor	Event recording by External Shock
----------	-----------------------------------

Video / Audio Compression	H.265 / ADPCM
---------------------------	---------------

Speaker	Operation Status alarm / Voice guidance
---------	---

External GPS	Synched with Google map, Keep track of location and Speed
--------------	---

Angle Of View	Front : 140 ° , Rear : 140 °
---------------	------------------------------

Acceptable current value of the supplied fuse	3A
---	----

Power	DC 12V ~ 24V
-------	--------------

Operation Temperature /Humidity	-10°C ~ 70°C(Storage temperature:-20°C ~ 80°C) / Humidity:10~95%
---------------------------------	--

PC Viewer	Windows XP/7/8/10, Support 32Bit / 64Bit, Synchronizing Google map with PC viewer is supported over Windows7 and explorer 10 as per Google' s policy.
-----------	---

DASH
CAM

2 CH

2CH FHD | FHD DASH CAM

G-ONW



DASH
CAM
2 CH

2CH FHD | FHD DASH CAM

G-ONW



Specification

Resolution / Frame Rate	Front : FHD (1920 X 1080) / Rear : FHD (1920 X 1080) / All cameras : Max. 30 FPS
-------------------------	--

Image Sensor	Full HD SONY STARVIS image Sensor
--------------	-----------------------------------

Audio input	Built-in Microphone
-------------	---------------------

G-Sensor	Event recording by External Shock
----------	-----------------------------------

Video / Audio Compression	H.264 / ADPCM
---------------------------	---------------

Speaker	Operation Status alarm / Voice guidance
---------	---

External GPS	Synched with Google map, Keep track of location and Speed
--------------	---

Angle Of View	All : 140 °
---------------	-------------

Acceptable current value of the supplied fuse	3A
---	----

Power	DC 12V ~ 24V
-------	--------------

Operation Temperature /Humidity	-10°C ~ 60°C(Storage temperature: -20°C ~ 80°C) / Humidity: 10~95%
---------------------------------	--

PC Viewer	Windows 7/8/10, Support 32Bit / 64Bit, Synchronizing Google map with PC viewer is supported over Windows7 and explorer 10 as per Google' s policy. WebView2 Runtime is required to use Google map.
-----------	--

DASH
CAM

2 CH

2CH FHD | HD DASH CAM

G6

DASH
CAM
2 CH



2CH FHD | HD DASH CAM

G6



Specification

Resolution / Frame Rate	FRONT : 1080P(1920x1080P), REAR 720P(1280x720P) / FRONT, REAR MAX 30FPS
Image Sensor	Full HD CMOS Sensor / HD CMOS Sensor
Audio input	Built-in Microphone
G-Sensor	Event recording by External Shock
Video / Audio Compression	H.264 / ADPCM
Speaker	Operation Status alarm / Voice guidance
External GPS	Synched with Google map, Keep track of location
Angle Of View	All 140°
Acceptable current value of the supplied fuse	3A
Power	DC 12V ~ 24V
Operation Temperature /Humidity	-20°C ~ 70°C(Storage temperature: -20°C ~ 80°C) / Humidity: 10~95%
PC Viewer	Windows VISTA/7/8/10, 32Bit / 64Bit supported, Synchronizing Google map with PC viewer is supported over Windows 7 and explorer 10 as per Google's policy.
LCD(Touch)	480x320 Pressure type LCD PANEL

DASH
CAM

2 CH

2CH FHD | HD DASH CAM

Z7



DASH
CAM
2 CH

2CH FHD | HD DASH CAM

Z7



Specification

Resolution / Frame Rate	FRONT : 1080P(1920x1080P), REAR 720P(1280x720P) FRONT, REAR MAX 30FPS
Image Sensor	Full HD CMOS Sensor / HD CMOS Sensor
Audio input	Built-in Microphone
G-Sensor	Event recording by External Shock
Video / Audio Compression	H.264 / ADPCM
Speaker	Operation Status alarm / Voice guidance
External GPS	Synched with Google map, Keep track of location
Angle Of View	All 140°
Acceptable current value of the supplied fuse	3A
Power	DC 12V ~ 24V
Operation Temperature / Humidity	-10°C ~ 60°C(Storage temperature: -20°C ~ 80°C) / Humidity: 10~95%
PC Viewer	Windows 7/8/10, 32Bit / 64Bit supported, WebView2 Runtime is required to use Google map.
LCD(Touch)	480x320 Pressure type LCD PANEL

DASH
CAM

2 CH

2CH FHD | FHD DASH CAM

G7

G7
DREAM EYE
2CH FHD BLACKBOX

DASH
CAM
2 CH



2CH FHD | FHD DASH CAM

G7



Specification

Resolution / Frame Rate	FRONT : 1080P(1920x1080P), REAR 1080P(1280x720P) FRONT, REAR MAX 30FPS
Image Sensor	Full HD CMOS Sensor
Audio input	Built-in Microphone
G-Sensor	Event recording by External Shock
Video / Audio Compression	H.264 / ADPCM
Speaker	Operation Status alarm / Voice guidance
External GPS	Synched with Google map, Keep track of location
Angle Of View	All 140°
Acceptable current value of the supplied fuse	3A
Power	DC 12V ~ 24V
Operation Temperature / Humidity	-20°C ~ 70°C(Storage temperature: -20°C ~ 80°C) / Humidity: 10~95%
PC Viewer	Windows VISTA/7/8/10, 32Bit / 64Bit supported, Synchronizing Google map with PC viewer is supported over Windows 7 and explorer 10 as per Google's policy.
LCD(Touch)	480x320 Pressure type LCD PANEL

DASH
CAM

2 CH

2CH FHD | FHD DASH CAM

Z8



DASH
CAM
—
2 CH

2CH FHD | FHD DASH CAM

Z8



Specification

Resolution / Frame Rate	FRONT : 1080P(1920x1080P), REAR 1080P(1920x1080P) FRONT, REAR MAX 30FPS
Image Sensor	Full HD CMOS Sensor
Audio input	Built-in Microphone
G-Sensor	Event recording by External Shock
Video / Audio Compression	H.264 / ADPCM
Speaker	Operation Status alarm / Voice guidance
External GPS	Synched with Google map, Keep track of location
Angle Of View	All 140°
Acceptable current value of the supplied fuse	3A
Power	DC 12V ~ 24V
Operation Temperature / Humidity	-10°C ~ 60°C(Storage temperature: -20°C ~ 80°C) / Humidity: 10~95%
PC Viewer	Windows 7/8/10, 32Bit / 64Bit supported, WebView2 Runtime is required to use Google map.
LCD(Touch)	480x320 Pressure type LCD PANEL

DASH
CAM

2 CH

2CH FHD | FHD DASH CAM

M7T



DASH
CAM
—
2 CH

2CH FHD | FHD DASH CAM

M7T



Specification

Resolution / Frame Rate	FRONT / EXTERNAL 1080P(1920x1080P) FRONT, EXTERNAL MAX 30FPS
Image Sensor	Full HD CMOS Sensor
Audio input	Built-in Microphone
G-Sensor	Event recording by External Shock
Video / Audio Compression	H.264 / ADPCM
Speaker	Operation Status alarm / Voice guidance
External GPS	Synched with Google map, Keep track of location
Angle Of View	All 140°
Acceptable current value of the supplied fuse	3A
Power	DC 12V ~ 24V
Operation Temperature / Humidity	-10°C ~ 60°C(Storage temperature: -20°C ~ 80°C) / Humidity: 10~95%
PC Viewer	Windows ViSTA/7/8/10, 32Bit / 64Bit supported, Synchronizing Google map with PC viewer is supported over Windows 7 and explorer 10 as per Google's policy.
LCD(Touch)	480x320 Pressure type LCD PANEL

DASH
CAM

2 CH

2CH QHD | QHD DASH CAM

QVS100

withCLOUD®



DASH
CAM
2 CH

2CH QHD | QHD DASH CAM

QVS100



Specification

Resolution / Frame Rate	FRONT / REAR QHD(2560x1440P) FRONT, REAR MAX 30FPS
Image Sensor	QHD SONY STARVIS Sensor
Audio input	Built-in Microphone
G-Sensor	Event recording by External Shock
Video / Audio Compression	H.265 / ADPCM
Speaker	Operation Status alarm / Voice guidance
External GPS	Synched with Google map, Keep track of location and Speed
Angle Of View	All 130°
Acceptable current value of the supplied fuse	3A
Power	DC 12V ~ 24V
Operation Temperature / Humidity	-10°C ~ 60°C(Storage temperature: -20°C ~ 80°C) / Humidity: 10~95%
PC Viewer	Windows VISTA/7/8/10, 32Bit / 64Bit supported, Synchronizing Google map with PC viewer is supported over Windows 7 and explorer 10 as per Google's policy.
LCD(Touch)	480x320 Pressure type LCD PANEL

DASH
CAM

2 CH

2CH UHD | FHD DASH CAM

HANBL-U

withCLOUD®



DASH
CAM
2 CH

2CH UHD | FHD DASH CAM

HANBL-U



Specification

Resolution / Frame Rate	FRONT UHD(3840x2160P) / REAR FHD(1920x1080P) FRONT, REAR MAX 30FPS
Image Sensor	QHD SONY STARVIS Sensor
Audio input	Built-in Microphone
G-Sensor	Event recording by External Shock
Video / Audio Compression	H.265 / ADPCM
Speaker	Operation Status alarm / Voice guidance
External GPS	Synched with Google map, Keep track of location
Angle Of View	All 140°
Acceptable current value of the supplied fuse	3A
Power	DC 12V ~ 24V
Operation Temperature / Humidity	-10°C ~ 60°C(Storage temperature: -20°C ~ 80°C) / Humidity: 10~95%
PC Viewer	Windows 7/8/10, 32Bit / 64Bit supported, CPU i5 3.0GHz, at least memory 4GB Required- Playing more than three channel at once could cause delay according to PC specification. WebView 2 Runtime required to use Google map.
LCD(Touch)	480x320 Capacitive LCD PANEL
OBD2	Check and diagnose vehicle status using OBD2 module (Option)
Connected(Cat.M1)	Parking shock alarm, checking park location and vehicle battery status (Option)

DASH
CAM

2 CH

3CH QHD | FHD | FHD DASH CAM

G-ON3

withCLOUD®



DASH
CAM
3 CH

3CH QHD | FHD | FHD DASH CAM

G-ON3



Specification

Resolution / Frame Rate	Front : QHD (2560 X 1440) / Rear, Interior, Exterior: FHD (1920 X 1080)
Image Sensor	SONY Starvis (HDR)
Audio input	Built-in Microphone
G-Sensor	Event recording by External Shock
Video / Audio Compression	H.265 / ADPCM
Speaker	Operation Status alarm / Voice guidance
External GPS	Synched with Google map, Keep track of location and Speed
Angle Of View	Front : 140 ° , Interior : 180 ° , Rear & Exterior: 140 °
Acceptable current value of the supplied fuse	3A
Power	DC 12V ~ 24V
Operation Temperature /Humidity	-10°C ~ 70°C(Storage temperature:-20°C ~ 80°C) / Humidity: 10~95%
PC Viewer	Windows XP/7/8/10, Support 32Bit / 64Bit, Synchronizing Google map with PC viewer is supported over Windows7 and explorer 10 as per Google' s policy.

DASH
CAM

3 CH

3CH FHD | FHD | HD DASH CAM

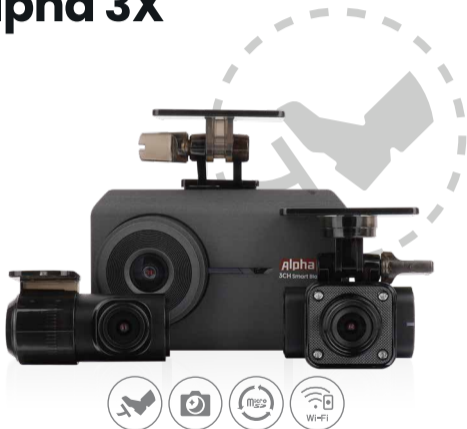
Alpha 3X

DASH
CAM
—
3 CH



3CH FHD | FHD | HD DASH CAM

Alpha 3X



Specification

Resolution / Frame Rate	FRONT, REAR FHD(1920x1080P) / IR INNER CAM HD(1280x720P) FRONT, REAR MAX 30FPS / IR INNER CAM 10FPS
Image Sensor	FULL HD CMOS Image sensor
Audio input	Built-in Microphone
G-Sensor	Event recording by External Shock
Video / Audio Compression	H.264 / ADPCM
Speaker	Operation Status alarm / Voice guidance
External GPS	Synched with Google map, Keep track of location
Angle Of View	FRONT, REAR 140° / IR INNER CAM 130°
Acceptable current value of the supplied fuse	3A
Power	DC 12V ~ 24V
Operation Temperature / Humidity	-10°C ~ 60°C(Storage temperature: -20°C ~ 80°C) / Humidity: 10~95%
PC Viewer	Windows 7/8/10, 32Bit / 64Bit supported, CPU i5 3.0GHz, at least memory 4GB Required- Playing more than three channel at once could cause delay according to PC specification. WebView 2 Runtime required to use Google map.
LCD(Touch)	480x320 Pressure type LCD PANEL

DASH
CAM

3 CH

3CH FHD | FHD | HD DASH CAM

Alpha edge



DASH
CAM
—
3 CH

3CH FHD | FHD | HD DASH CAM

Alpha edge



Specification

Resolution / Frame Rate	FRONT, REAR FHD(1920x1080P) / IR INNER CAM HD(1280x720P) FRONT, REAR MAX 30FPS / IR INNER CAM 10FPS
Image Sensor	Full HD HDR SONY STARVIS Image sensor
Audio input	Built-in Microphone
G-Sensor	Event recording by External Shock
Video / Audio Compression	H.264 / ADPCM
Speaker	Operation Status alarm / Voice guidance
External GPS	Synched with Google map, Keep track of location
Angle Of View	FRONT, REAR 140° / IR INNER CAM 130°
Acceptable current value of the supplied fuse	3A
Power	DC 12V ~ 24V
Operation Temperature / Humidity	-10°C ~ 60°C(Storage temperature: -20°C ~ 80°C) / Humidity: 10~95%
PC Viewer	Windows 7/8/10, 32Bit / 64Bit supported, CPU i5 3.0GHz, at least memory 4GB Required- Playing more than three channel at once could cause delay according to PC specification. WebView 2 Runtime required to use Google map.
LCD(Touch)	1.9inch Capacitive LCD PANEL

DASH
CAM

3 CH

3CH QHD | HD | HD DASH CAM

GT1000 PRO

withCLOUD®



DASH
CAM
—
3 CH

3CH QHD | HD | HD DASH CAM

GT1000 PRO



Specification

Resolution / Frame Rate	FRONT, 1440P(2560x1440P) / SIDE 720P(1280x720P), FRONT, SIDE MAX 30FPS
Image Sensor	QHD SONY STARVIS Sensor(FRONT-QHD, LEFT-HD, RIGHT-HD)
Audio input	Built-in Microphone
G-Sensor	Event recording by External Shock
Video / Audio Compression	H.265 / ADPCM
Speaker	Operation Status alarm / Voice guidance
External GPS	Synched with Google map, Keep track of location
Angle Of View	FRONT 130° / LEFT, RIGHT 130°
Acceptable current value of the supplied fuse	3A
Power	DC 12V ~ 24V
Operation Temperature / Humidity	-10°C ~ 60°C(Storage temperature: -20°C ~ 80°C) / Humidity: 10~95%
PC Viewer	Windows 7/8/10, 32Bit / 64Bit supported, CPU i5 3.0GHz, at least memory 4GB Required- Playing more than three channel at once could cause delay according to PC specification. WebView 2 Runtime required to use Google map.
LCD(Touch)	4.5inch 854x480 Pressure type LCD PANEL
WATER/DUSTPROOF	LEFT, RIGHT CAM IP69K

DASH
CAM

3 CH

3CH QHD | FHD | FHD DASH CAM

GTX Premium

withCLOUD®



DASH
CAM
3 CH

3CH QHD | FHD | FHD DASH CAM

GTX Premium



Specification

Resolution / Frame Rate	Front : QHD(2560 X 1440), Rear/Interior : FHD (1920 X 1080) / All cameras : Max. 30 FPS
Image Sensor	QHD SONY STARVIS Image sensor
Audio input	Built-in Microphone
G-Sensor	Event recording by External Shock
Video / Audio Compression	H.265 / ADPCM
Speaker	Operation Status alarm / Voice guidance
External GPS	Synched with Google map, Keep track of location
Angle Of View	Front : 150 ° , Rear : 140 ° , Interior : 140 °
Acceptable current value of the supplied fuse	3A
Power	DC 12V ~ 24V
Operation Temperature / Humidity	-10°C ~ 60°C(Storage temperature: -20°C ~ 80°C) / Humidity: 10~95%
PC Viewer	Windows 7/8/10, 64Bit supported, WebView 2 Runtime is required. Synchronizing Google map with PC viewer is supported over Windows 7 and explorer 10 as per Google's policy.
LCD(Touch)	480x320 Pressure type LCD PANEL
Supported features	Front HDR, prevent battery discharge, cut off high temperature, Wi-Fi phone connection, ADAS, safe drive assistance, GNET withCLOUD, GNET IoT communication

DASH
CAM

3 CH

3CH QHD | FHD | FHD DASH CAM

HANCAM 3X-Q

withCLOUD®



DASH
CAM
3 CH

3CH QHD | FHD | FHD DASH CAM

HANCAM 3X-Q



Specification

Resolution / Frame Rate	FRONT QHD(2560x1440P), CAM1, CAM2 FHD(1920x1080P) / FRONT, CAM1, CAM2 Max 30fps
Image Sensor	QHD HDR SONY STARVIS SENSOR
Audio input	Built-in Microphone
G-Sensor	Event recording by External Shock
Video / Audio Compression	H.265 / ADPCM
Speaker	Operation Status alarm / Voice guidance
External GPS	Google map synchronization to check location(Optional)
Angle Of View	FRONT 130° / CAM1 140° / CAM2 180°
Acceptable current value of the supplied fuse	3A
Power	DC 12V ~ 24V
Operation Temperature / Humidity	-10°C ~ 60°C(Storage temperature: -20°C ~ 80°C) / Humidity: 10~95%
PC Viewer	Windows 7/8/10, 32Bit / 64Bit supported, CPU i5 3.0GHz, at least memory 4GB Required- Playing more than three channel at once could cause delay according to PC specification. WebView 2 Runtime required to use Google map.
LCD(Touch)	480x320 IPS LCD PANEL

DASH
CAM

3 CH

4CH FHD | FHD | FHD | FHD DASH CAM

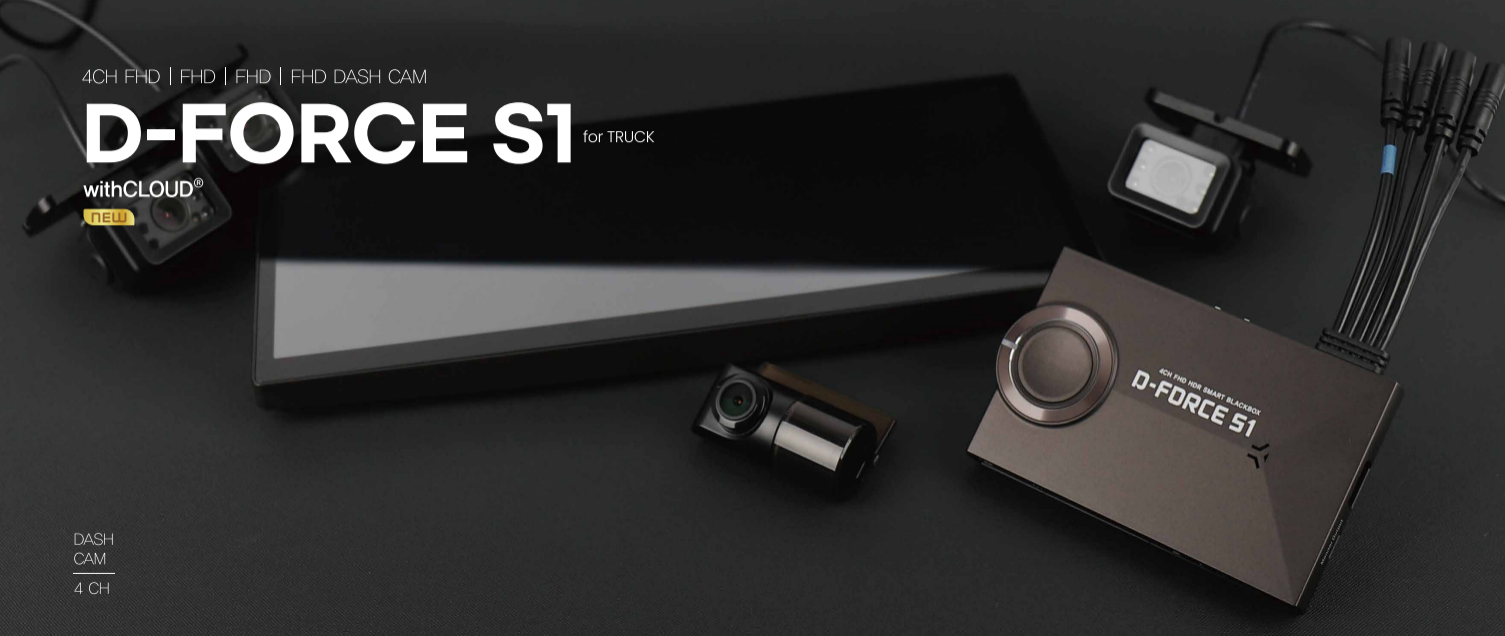
D-FORCE S1

for TRUCK

withCLOUD®

NEW

DASH
CAM
4 CH



4CH FHD | FHD | FHD | FHD DASH CAM

D-FORCE S1 for TRUCK



Specification

Resolution / Frame Rate	Front, Rear, Right, Left : FHD (1920 X 1080) All cameras : Max. 30 FPS
Image Sensor	FULL HD HDR SONY STARVIS SENSOR
Audio input	Built-in Microphone
G-Sensor	Event recording by External Shock
Video / Audio Compression	H.265 / ADPCM
Speaker	Operation Status alarm / Voice guidance
External GPS	Synched with Google map, keep track of time, location, and speed
Angle Of View	Front: 140°, Rear: 140°, Right Side: 140°, Left Side: 140°
Acceptable current value of the supplied fuse	3A
Power	DC 12V ~ 24V
Operation Temperature / Humidity	Dashcam:-20°~70°C(Storage temp.: -20°~80°C), LCD screen:-20°~70°C(Storage temp.: -20°~70°C) Humidity: 10~95%
PC Viewer	Windows VISTA/7/8/10, 32Bit/64Bit supported, CPU i5 3.0GHz, memory at least 4GB required- Playing more than three channel at once could cause delay according to PC specification. Supported from Windows7 and Internet Explorer 10.
LCD	12.3inch
Dust/Waterproof	External Camera IP69K

DASH
CAM

4 CH

4CH FHD | FHD | FHD | FHD DASH CAM

D-FORCE S1

for VAN

withCLOUD®

NEW

DASH
CAM
—
4 CH



4CH FHD | FHD | FHD | FHD DASH CAM

D-FORCE S1 for VAN



Specification

Resolution / Frame Rate	Front, Rear, Right, Left : FHD (1920 X 1080) All cameras : Max. 30 FPS
Image Sensor	Front, Rear - FULL HD HDR SONY STARVIS SENSOR Left, Right - FULL HD CMOS SENSOR
Audio input	Built-in Microphone
G-Sensor	Event recording by External Shock
Video / Audio Compression	H.265 / ADPCM
Speaker	Operation Status alarm / Voice guidance
External GPS	Synched with Google map, Keep track of location and Speed
Angle Of View	Front: 140°, Rear: 140°, Right Side: 140°, Left Side: 140°
Acceptable current value of the supplied fuse	3A
Power	DC 12V ~ 24V
Operation Temperature / Humidity	Dashcam:-10°~60°C(Storage temp.: -20°~80°C), LCD screen:-20°~60°C(Storage temp.: -20°~70°C) Humidity: 10~95%
PC Viewer	Windows VISTA/7/8/10, 32Bit/64Bit supported, CPU i5 3.0GHz, memory at least 4GB required- Playing more than three channel at once could cause delay according to PC specification. Supported from Windows7 and Internet Explorer 10.
LCD	12.3inch
Dust/Waterproof	External Camera IP69K

DASH
CAM

4 CH

4CH FHD | FHD | FHD | FHD DASH CAM

GT9000

NEW

DASH
CAM
4 CH



4CH FHD | FHD | FHD | FHD DASH CAM

GT9000



Specification

Resolution / Frame Rate	Front, Rear, Left, Right 1080P(1920x1080P) Front, Rear, Left, Right Max 30fps
Image Sensor	FULL HD CMOS SENSOR (ALL FHD)
Audio input	Built-in Microphone
G-Sensor	Event recording by External Shock
Video / Audio Compression	H.265 / ADPCM
Speaker	Operation Status alarm / Voice guidance
External GPS	Synched with Google map, keep track of location
Angle Of View	FRONT, REAR, LEFT, RIGHT 140°
Acceptable current value of the supplied fuse	3A
Power	DC 12V ~ 24V
Operation Temperature / Humidity	-10°~60°C(Storage temp.: -20°~80°C) / Humidity: 10~95%
PC Viewer	Windows 7/8/10, 32Bit/64Bit supported, CPU i5 3.0GHz, memory at least 4GB required- Playing more than three channel at once could cause delay according to PC specification. WebView2 Runtime required to use Google map.
LCD	10.36inch(Mount excluded)
Dust/Waterproof	External Camera IP69K

DASH
CAM

4 CH

4CH QHD | HD | HD | HD DASH CAM

GT900 α Premium



DASH
CAM
4 CH

4CH QHD | HD | HD | HD DASH CAM

GT900 α Premium



Specification

Resolution / Frame Rate	Front 1440P(2560x1440P) Rear, Left, Right 720P(1280x720P) Front, Rear, Left, Right Max 30fps
Image Sensor	QHD ONLY STARVIS SENSOR (Front-QHD, Rear-HD, Left-HD, Right-HD)
Audio input	Built-in Microphone
G-Sensor	Event recording by External Shock
Video / Audio Compression	H.265 / ADPCM
Speaker	Operation Status alarm / Voice guidance
External GPS	Synched with Google map, Keep track of location
Angle Of View	FRONT 140°, REAR, LEFT, RIGHT 130°
Acceptable current value of the supplied fuse	3A
Power	DC 12V ~ 24V
Operation Temperature / Humidity	-10°~60°C(Storage temp.: -20°~80°C) / Humidity: 10~95%
PC Viewer	Windows 7/8/10, 32Bit/64Bit supported, CPU i5 3.0GHz, memory at least 4GB required- Playing more than three channel at once could cause delay according to PC specification. WebView2 Runtime required to use Google map.
LCD(Touch)	4.5inch 854x480 Pressure type LCD PANEL
Dust/Waterproof	Side and Rear Camera IP69K

DASH
CAM

4 CH

1CH FHD DASH CAM

Z1

DASH
CAM

1 CH



1CH FHD DASH CAM

Z1



Specification

Resolution / Frame Rate	Inner Camera 1080P(1920x1080P) Inner Camera Max 30fps
Image Sensor	Full HD CMOS Sensor
Audio input	Built-in Microphone
G-Sensor	Event recording by External Shock
Video / Audio Compression	H.264 / ADPCM
External GPS	Synched with Google map, keep track of location
Angle Of View	Inner Camera 140°
Acceptable current value of the supplied fuse	3A
Power	DC 5V/12V
Operation Temperature / Humidity	-10°~60°C(Storage temp.: -20°~80°C) Humidity: 10~95%
PC Viewer	Windows 7/8/10, 32Bit/64Bit supported, CPU i5 3.0GHz, memory at least 4GB required- Playing more than three channel at once could cause delay according to PC specification. WebView2 Runtime required to use Google map.

DASH
CAM

1 CH

2CH FHD MOTORCYCLE CAM

MVR Y1

NEW

DASH
CAM
MOTOR
CYCLE



2CH FHD MOTORCYCLE CAM

MVR Y1



Specification

Resolution / Frame Rate	Front, Rear 1080P (1920x1080P) / Max 30fps
Image Sensor	FULL HD CMOS Sensor Front-FHD, Rear-FHD
Audio input	Built-in Microphone
G-Sensor	Event recording by External Shock
Video / Audio Compression	H.264 / ADPCM
External GPS	Synched with Google map, Keep track of location
Angle Of View	All : 140 °
Acceptable current value of the supplied fuse	3A
Power	DC 12V
Operation Temperature / Humidity	-10°~60°C(Storage temp.: -20°~80°C) Humidity: 10~95%
PC Viewer	Windows 7/8/10, 64Bit supported, CPU i5 3.0GHz, memory at least 4GB required- Playing more than three channel at once could cause delay according to PC specification. WebView2 Runtime required to use Google map.
Dust/Waterproof	All IP69K

DASH
CAM

MOTOR
CYCLE

2CH FHD MOTORCYCLE CAM

MVR S1

DASH
CAM
—
MOTOR
CYCLE



2CH FHD MOTORCYCLE CAM

MVR S1



Specification

Resolution / Frame Rate	Front, Rear 1080P (1920x1080P) / Max 30fps
Image Sensor	FULL HD HDR CMOS Sensor Front-FHD, Rear-FHD
Audio input	Built-in Microphone
G-Sensor	Event recording by External Shock
Video / Audio Compression	H.264 / ADPCM
External GPS	Synched with Google map, Keep track of location
Angle Of View	All : 140 °
Acceptable current value of the supplied fuse	3A
Power	DC 12V - 24V
Operation Temperature / Humidity	-20°~60°C(Storage temp.: -20°~80°C) Humidity: 10~95%
PC Viewer	Windows VISTA/7/8/10, 32Bit/64Bit supported, CPU i5 3.0GHz, memory at least 4GB required- Playing more than three channel at once could cause delay according to PC specification. WebView2 Runtime required to use Google map.
Dust/Waterproof	Camera IP69K

DASH
CAM

MOTOR
CYCLE

2CH FHD MOTORCYCLE CAM

MVR G1 PRO

DASH
CAM
—
MOTOR
CYCLE



2CH FHD MOTORCYCLE CAM

MVR G1 PRO



Specification

Resolution / Frame Rate	Front, Rear 1080P (1920x1080P) / Max 30fps
Image Sensor	FULL HD HDR CMOS Sensor Front-FHD, Rear-FHD
Audio input	Built-in Microphone
G-Sensor	Event recording by External Shock
Video / Audio Compression	H.265 / ADPCM
External GPS	Synched with Google map, Keep track of location
Angle Of View	All : 140 °
Acceptable current value of the supplied fuse	3A
Power	DC 12V - 24V
Operation Temperature / Humidity	-10°C ~ 60°C(Storage temp.: -20°C ~ 80°C) Humidity: 10~95%
PC Viewer	Windows 7/8/10, 64Bit supported, CPU i5 3.0GHz, memory at least 4GB required- Playing more than three channel at once could cause delay according to PC specification. WebView2 Runtime required to use Google map.
Dust/Waterproof	All IP69K

DASH
CAM

MOTOR
CYCLE

2CH QHD MOTORCYCLE CAM

MVR Q1

withCLOUD®

DASH
CAM
MOTOR
CYCLE



2CH QHD MOTORCYCLE CAM

MVR Q1



Specification

Resolution / Frame Rate	Front, Rear 1440P (2560x1440P) / Max 30fps
Image Sensor	QHD SONY STARVIS SENSOR
Audio input	Built-in Microphone
G-Sensor	Event recording by External Shock
Video / Audio Compression	H.265 / ADPCM
External GPS	Synched with Google map, Keep track of location
Angle Of View	All : 140 °
Acceptable current value of the supplied fuse	3A
Power	DC 12V - 24V
Operation Temperature / Humidity	-10°C ~ 60°C(Storage temp.: -20°C ~ 80°C) Humidity: 10~95%
PC Viewer	Windows 7/8/10, 32Bit/64Bit supported, CPU i5 3.0GHz, memory at least 4GB required- Playing more than three channel at once could cause delay according to PC specification. WebView2 Runtime required to use Google map.
Dust/Waterproof	All IP69K

DASH
CAM

MOTOR
CYCLE

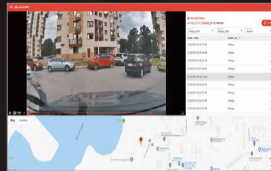


withCLOUD

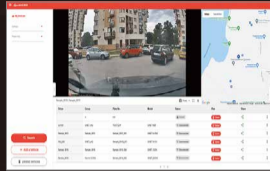
withCLOUD is beyond standard cloud system, Gnet System's platform which, users can easily access and share videos.



Video Upload



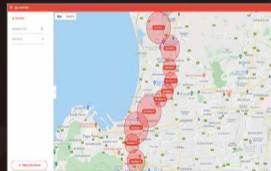
Download automatically



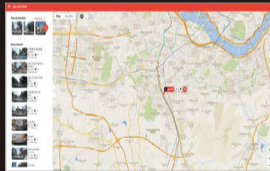
Live View



GPS Tracking



Geo-Fence



Account Sharing

Smart connection via Wi-Fi



View videos, change settings, and update firmware without using cable, instead via Wi-Fi connection by phone.

*Phone connection only when Wi-Fi dongle is connected to dashcam. (Wi-Fi dongle optional)



View recorded videos

Easily connect dashcam via Wi-Fi and find and download recorded videos via GNET app without connecting cable.



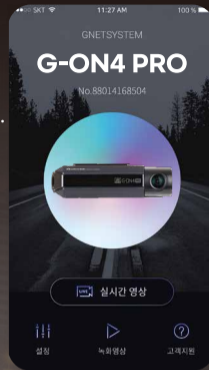
View real-time videos

Find real-time videos through GNET app. View videos and change settings simply through simply by phone.



Firmware upgrade

Upgrade dashcam simply via app, instead of connecting to PC.



G-NET APP



ONE-STOP SYSTEM



OEM

OEM is also available.